

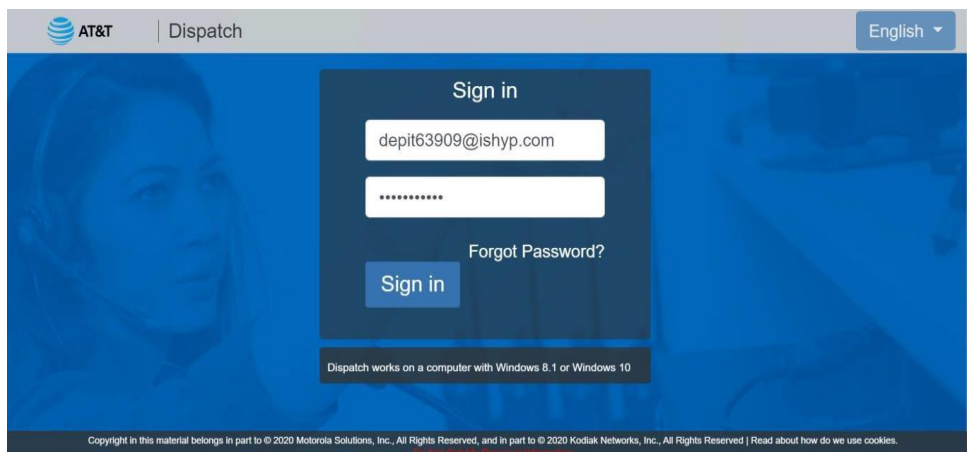
# Instructions to Upgrade WDS to Version 11.3

**PREREQUISITES:** Please check prior to proceeding:

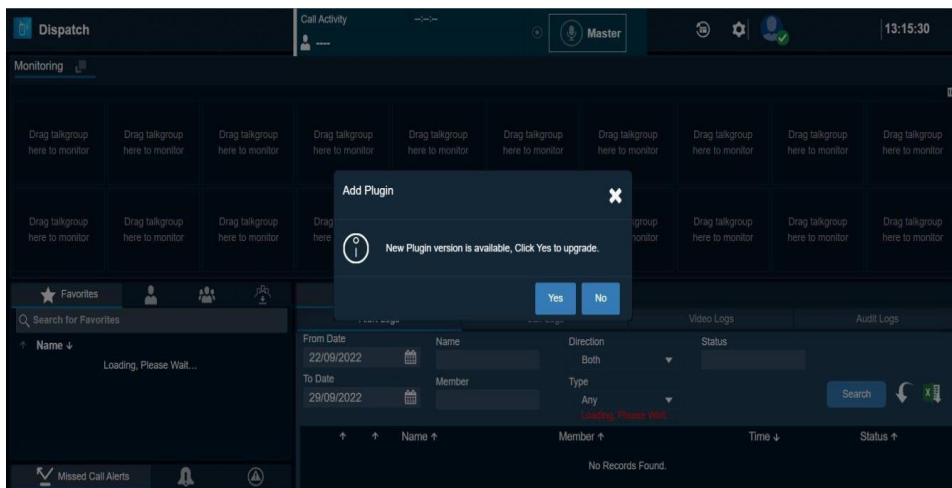
- Ensure multiple dispatcher plugins are not installed in Laptop/Work-Station (This can be verified in Control Panel->Programs->Programs and Features).
- Time in Laptop/WorkStation where the dispatcher will be accessed should be up-to-date. There should not be any offset.
- Google Chrome Version should be up-to-date. Minimum Chrome version needed for extension 1.4 extension (chrome manifest v3) is 107/108.
- Microsoft Visual C++ Redistributable (x86) 2013 or whatever version is required. (This can be verified in Control Panel->Programs->Programs and Features. For Windows 10, this can be checked in Settings > Apps). If not installed, please contact your organization's IT team for assistance.
- Always use the below URL to login to ATT WDS and highly recommend bookmarking the URL.  
<https://wds.eptt.kodiaknetworks.com/WebDispatcher/idmui/index.html#/login>
- **NOTE: If multiple individuals who have unique log-in credentials use a given PC, each user will have to perform this procedure on the PC.**

## 1. Login to 10.x WDS

<https://wds.eptt.kodiaknetworks.com/WebDispatcher/idmui/index.html#/login>

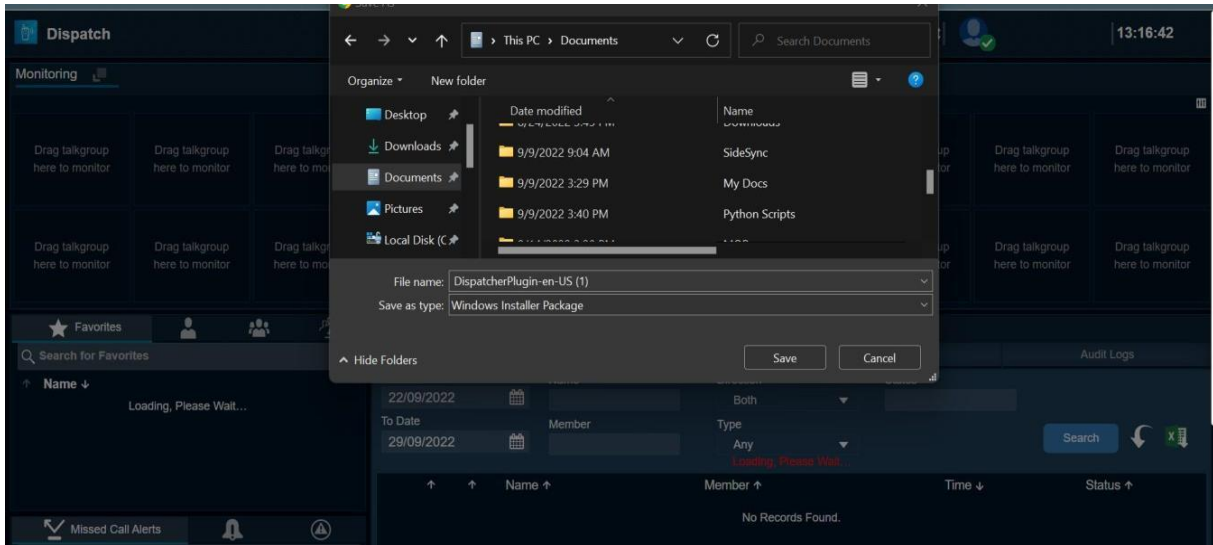


## 2. The pop-up shown below will be displayed

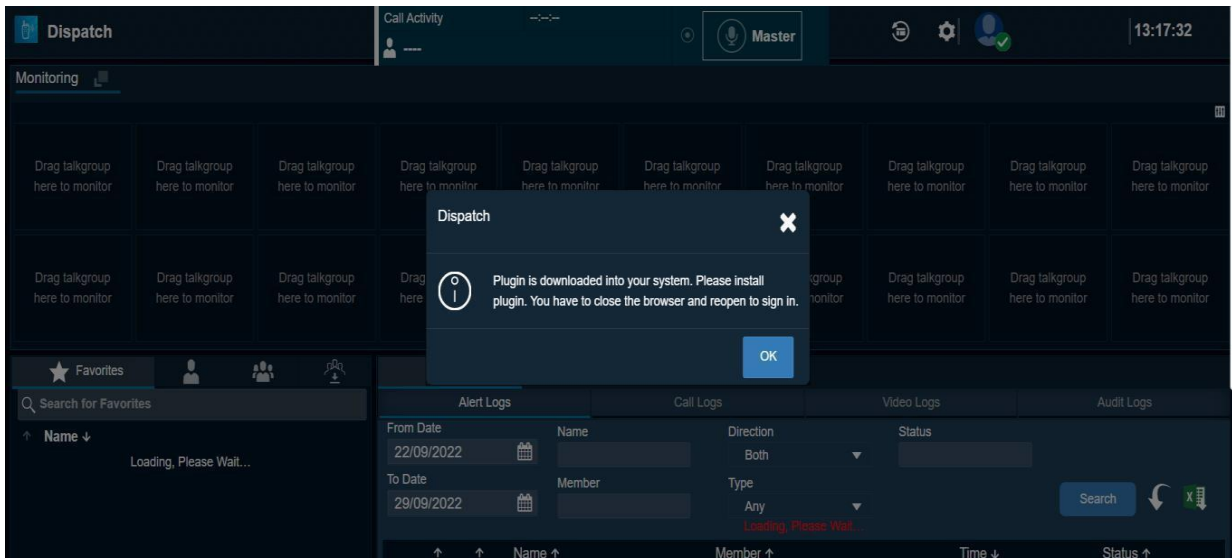


# Instructions to Upgrade WDS to Version 11.3

3. Download the new plugin to your local desktop and install the plugin after download is completed.

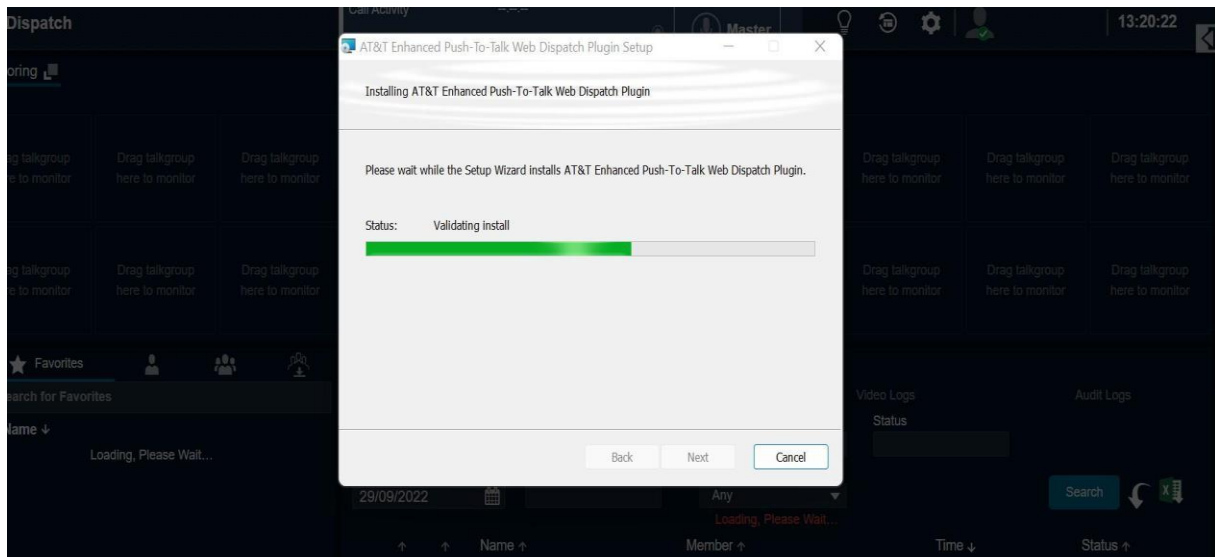


4. This pop-up is shown until the plugin is installed.

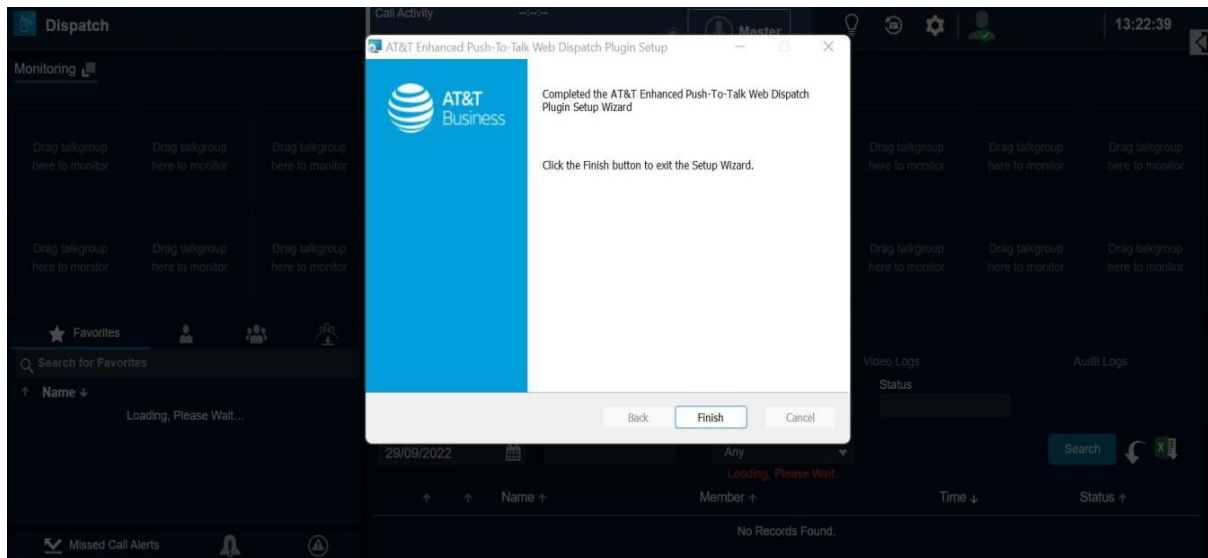


# Instructions to Upgrade WDS to Version 11.3

5. This screen will be shown while the plugin is installing

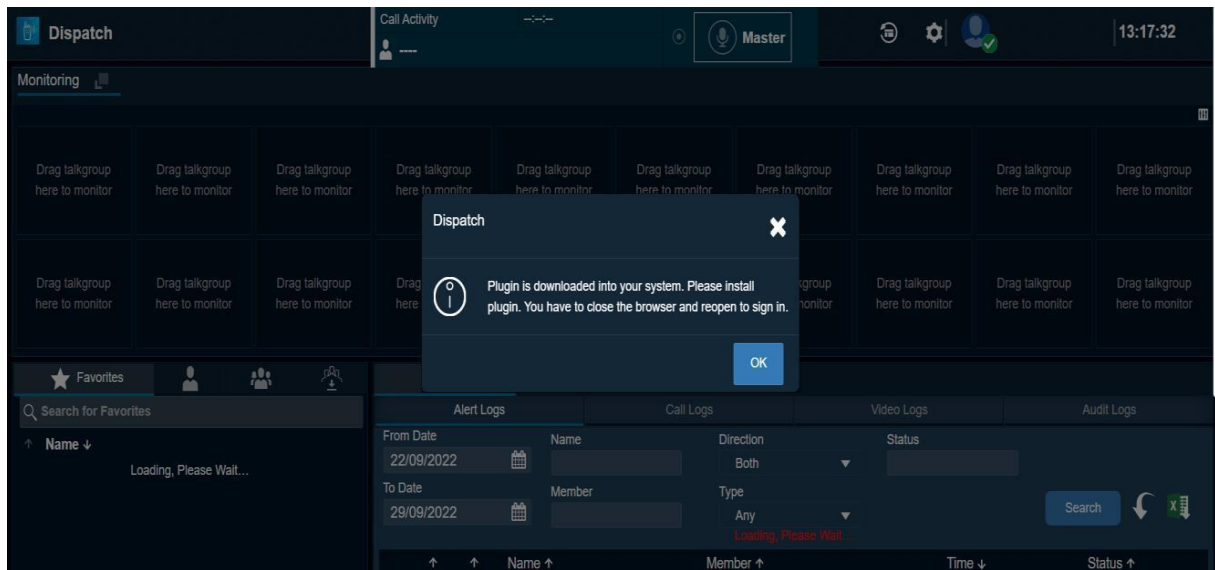


6. The screen below is shown after the installation is complete.



# Instructions to Upgrade WDS to Version 11.3

7. Click OK after the plugin is installed



8. Close the Web Dispatch tab and Login again into WDS using the URL below.

<https://wds.eptt.kodiaknetworks.com/WebDispatcher/idmui/index.html#/login>

With WDS 11.3, there are new password requirements. If your previous password does not meet these requirements, you will be asked to update it. The requirements are:

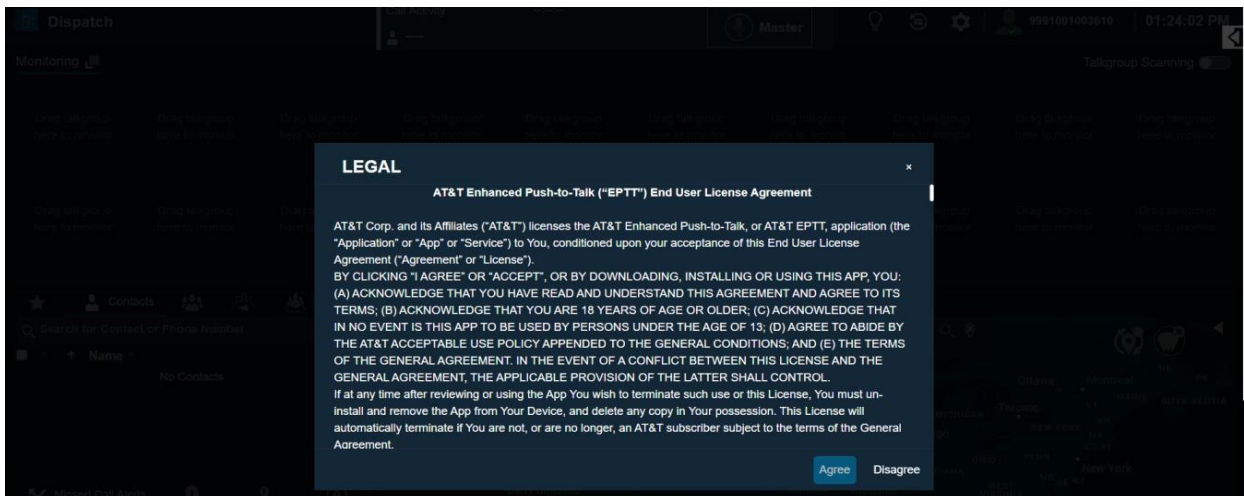
### Password Complexity

- At least 10 characters
- At least one uppercase letter
- At least one lowercase letter
- At least one number
- At least one special character
- Cannot match the username

Additionally, there is a new requirement to change your password every 90 days.

# Instructions to Upgrade WDS to Version 11.3

9. The EULA will be displayed.



10. Once the EULA is accepted, the WDS upgrade is complete.

